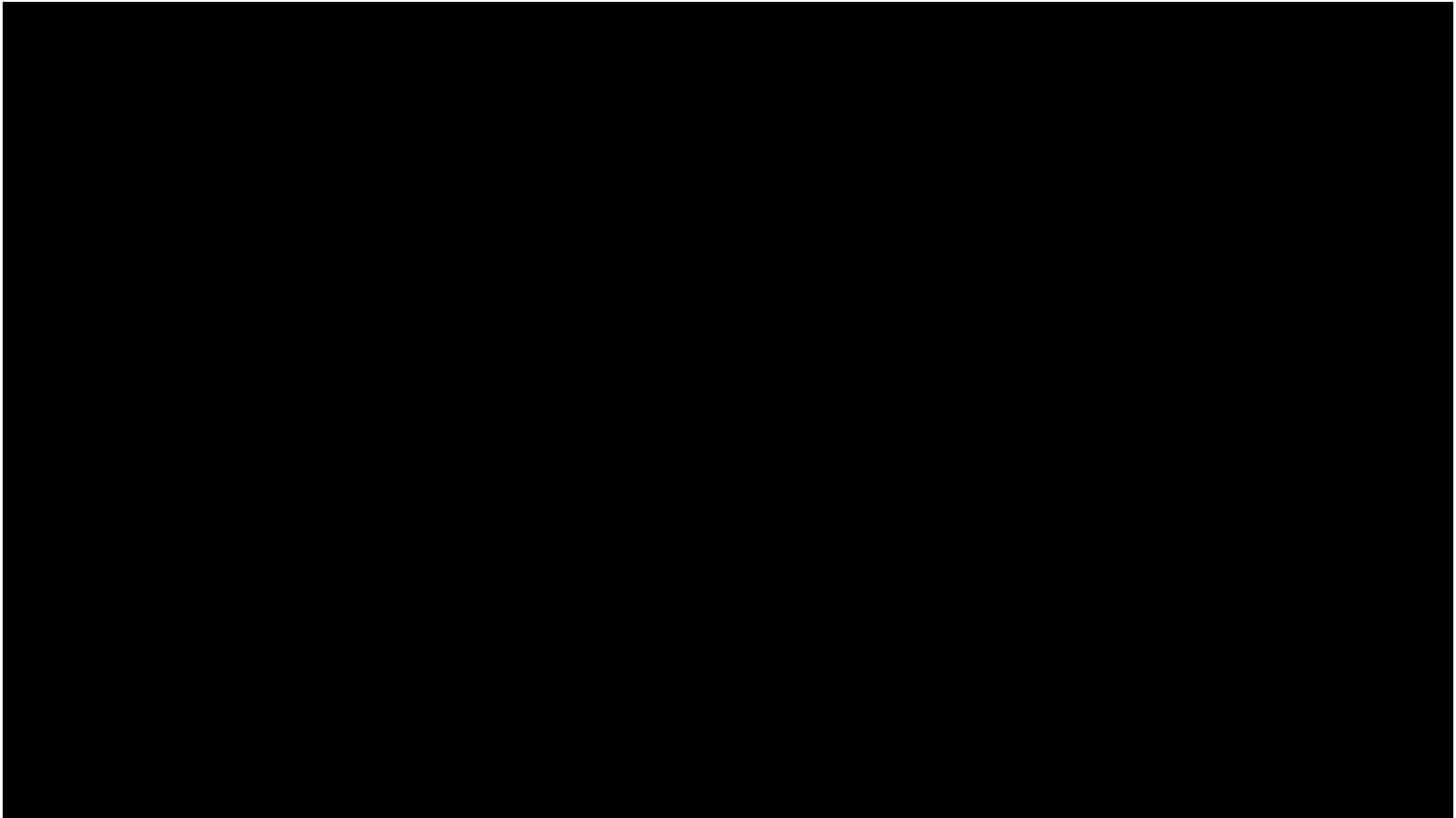


# Smarter Working in Stockton – Accommodation and Buildings



**People Select Committee**

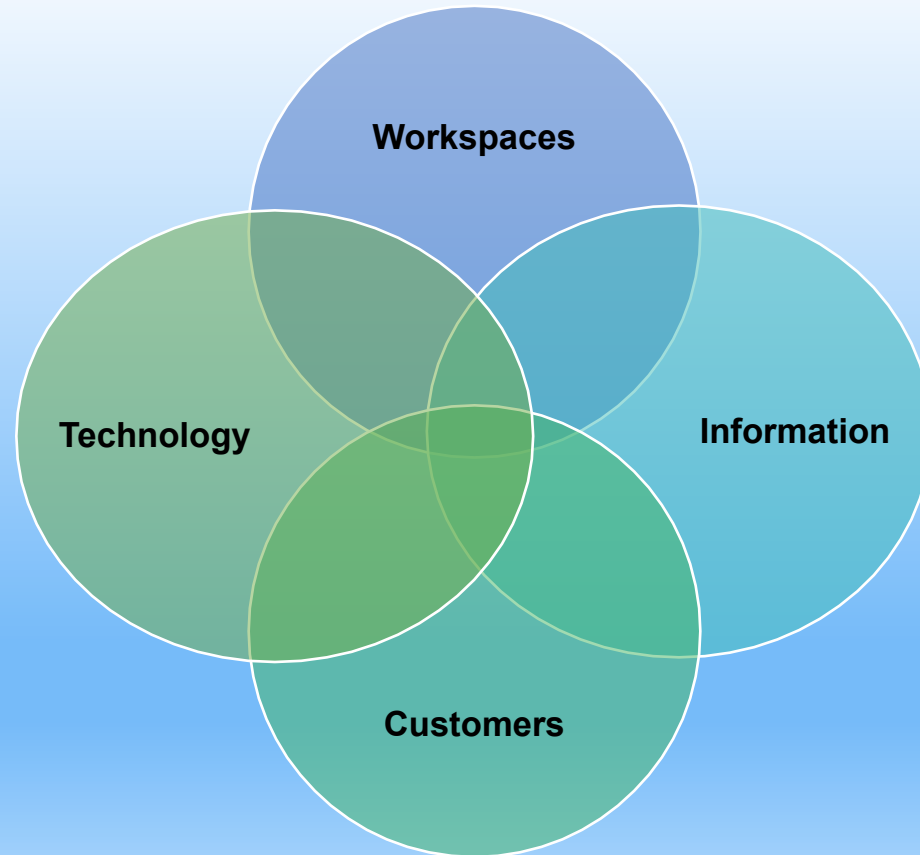


Stockton-on-Tees  
BOROUGH COUNCIL

## Vision

- Modern Council that responds to customer needs.
- One Council approach to customers, workspaces, information and technology.

## Principles



# Workspace Principles

## Workspaces

Accessible and inspiring workspaces for our employees which enables collaborative and flexible working

- Flexible spaces
- Workspace that fits the worker profile
- Improved ergonomic layout
- Effective use of space
- Team space
- Essential physical storage space only
- Well-lit, comfortable and ventilated
- Formal and informal meeting space
- Workspaces designed for task
- Teams co-located for collaboration



Stockton-on-Tees  
BOROUGH COUNCIL

# Our Buildings

- 11 Office Buildings
- 21,000 m<sup>2</sup>
- 1,520 occupants
- Costly to run and maintain



# Best Practice



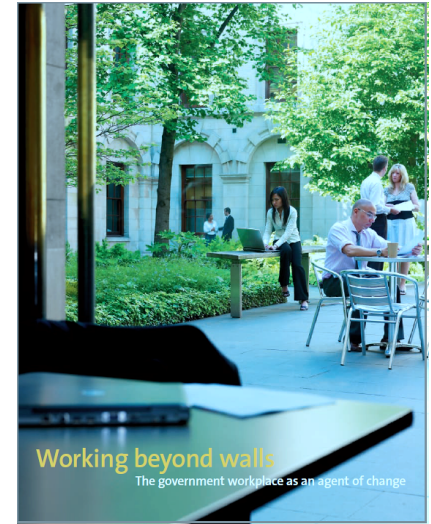
## The Way We Work A Guide to Smart Working in Government



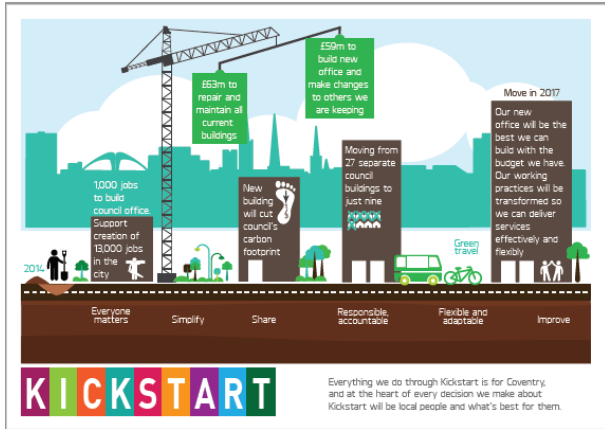
CIVIL SERVICE REFORM



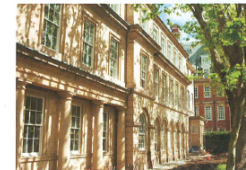
[flexibility.co.uk](http://flexibility.co.uk)  
RESOURCES FOR NEW WAYS OF WORKING



# Learning from Others



## Welcome to West Offices



West Offices is the council's primary office building and customer centre located in an 1841 grade 2\* listed building and former railway station. Sensitive redevelopment has ensured significant historical and architectural features have been retained including the first integrated railway hotel, a fine example of a Victorian train shed canopy and George Hudson's original Board Room.

Today, West Offices boasts new credentials as a modern, efficient, cost-effective and sustainable office building and customer centre that will enable the council to realise more than £17million in savings over the next 25 years, having reduced from 17 buildings to two (West Offices and Hazel Court) and delivering our services from a single, centrally located customer centre, and operating flexibly within our office space.

THIS GUIDE and information pack will help you to quickly find your way around West Offices and start using the facilities available.

Inside there is useful information on everything from access arrangements, facilities, who to contact and office protocols. For further information visit our pages on the intranet.

**Address & public contact numbers:**  
 City of York Council  
 West Offices  
 Station Rise  
 York Y01 6GA  
 Public General Enquiries: Tel: 01904 551550

*Partner organisations operating in West Offices:*  
 NHS Vale of York CCG, Referral Support Service (OCC), Citizens Advice York, HMRC, Police, Public Health England & HLNCR (Interserve) Ltd and Network Rail



# Scrutiny Review of Sickness Absence

- Hive Survey 2017
  - *Q. What's increasing the risk of sickness absence?*
  - *A. Office Accommodation*
- Recommendations
  - Fully explore smarter ways of working to enable greater flexibility
  - Premises assessments for top locations for sickness absence



# Discussion Forum

